

The logo for Sindhuja Infra Projects LLP features the word "SINDHUJA" in a bold, yellow, sans-serif font. Below it, the word "INFRA" is written in a dark blue, serif font, followed by "Projects LLP" in a smaller, dark blue, sans-serif font. To the right of the text is a stylized graphic of several curved, overlapping lines in shades of blue and white, resembling a wave or a modern architectural element.

**SINDHUJA**  
**INFRA** Projects LLP

Delivering the Vision  
from Concept to Completion





Each endeavour...  
... is a masterpiece.

When we are creating a masterpiece, only the best materials will do, thus we take the utmost care in searching for and selecting them.

**SINDHUJA**  
**INFRA** Projects LLP



## A Premier Construction & Property Development Company, with a Wealth of Experience across the Public & Private Sectors.

An excellent collaborator...

Sindhuja Infra Projects LLP., (formerly Sindhuja Constructions) is one of the leading construction and property development company which has executed a number of complex and high value projects through its vertically integrated approach, whilst using the experience and professional in-house services with technical innovation and sustainable construction solutions. We aim to be the preferred construction and development partner of choice for our clients, assured by the delivery of excellence, quality of service and by carefully selecting new opportunities with clients aligned to our core beliefs and objectives.

### Experience meets insight

We respect your ideas. Customer satisfaction is the top priority that we work hard on. We aim to deliver high standards as a solution partner before, during and after the project. Providing local insight as well as technical assistance is one of our major strengths.

We are known to deliver high quality, authentic design projects. Going beyond the mainstream, we also produce custom-made architectural concepts tailored for your needs.

To deliver High Quality Results,  
We will use a combination of People & Technology.



15  
Years of  
excellence

27  
Projects  
completed

5+  
Projects  
ongoing

10+  
Crores worth  
resources

Sindhuja Infra Projects LLP., will promote a performance-driven culture that will enable it to continue offering value-added construction services to its clients, as well as increase job site productivity, uphold workplace safety, make use of cutting-edge technology, and foster employee development. We will give our staff the tools and resources they need to continuously improve the calibre of their own work, which will reflect positively on the accomplishment of all business goals and objectives.

Successfully Completed  
and delivered **25 Lakh sft.**  
to client.



## Vision and Values

Our company vision and values are at the heart of all that we do. They are the basis of our company ethos and represent who we are and what we do.

### Vision

To safely construct projects for the benefit of our valued clients, and excellent delivery.

### Core Values



## What We Do

We design, construct and refurbish outstanding buildings.

Our in-house technical, design, engineering, procurement, project management and construction teams have the knowledge and experience required to successfully undertake your project from concept to completion.

The most Important aspects are

- Detailed specifications.
- Regular project reviews with team and advisors.
- A proven quality assurance methodology.

every client is different...  
...every project is different.

## Our Management

we're passionate about every project.

Innovation, safety and continuous Improvement are the cornerstones of everything we do. It's part of the value that extends beyond the materials, the talent and the timelines.



**Leela Prasad .CH**

Managing Director

CH. Leela Prasad has over 15 years of experience In the Infrastructure sectors and allied areas. He is well experienced in execution of Commercial Buildings, Villas and High Rise Residential apartments. His current responsibilities include overall monitoring and execution of projects.

### Our Commitment

Sindhuja Infra Projects LLP., is committed to exceeding Industry standards by developing strong partnerships with clients, suppliers and employees, and completing projects with professionalism. Our focus is the successful completion of your project both on time and within budget whilst adhering to the strictest standards of quality and safety.



## Handovering Stage

VAIBHAVI VALERO  
LUXURY APARTMENTS  
@ Jubilee hills, Hyderabad.

Total No. of Units : 48

Construction Area : 2,50,000 Sft.



# Handovering Stage



SUDHESHNA  
ALPINE HEIGHTS & VISTAS  
@ Kaza, Guntur.

Total No. of Villas : 175  
Construction Area : 7,25,000 Sft.



## Handovering Stage

SAI SHAKTI KINGSTON 28  
@ Gachibowli Hyderabad.

Total No. of Units :	28
Construction Area :	1,20,000 Sft.



East Facing



West Facing



North Facing



South Facing



## Ongoing Project

GOLDEN KEY (Sriven Mayuri)

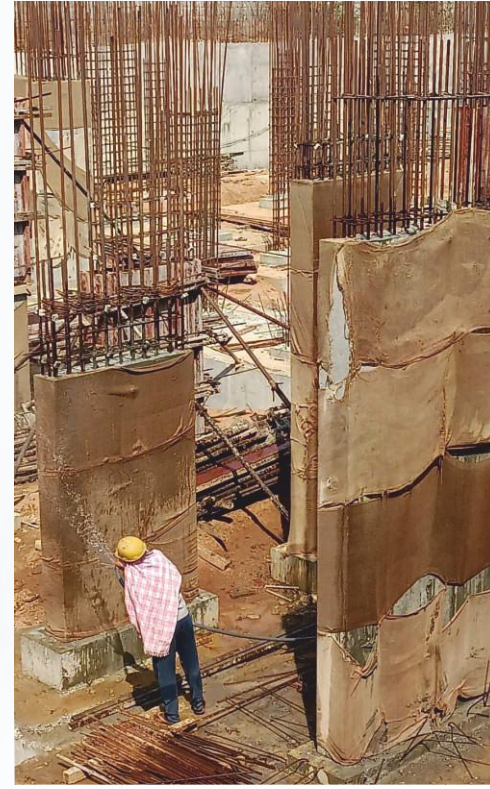
@ Medchal, Hyderabad.



Total No. of Units : 328

Construction Area : 7,20,000 Sft.





Ongoing Project

GOLDEN KEY (Sriven Mayuri)  
@ Medchal, Hyderabad



Ongoing Project

**SIRI ELITE**  
A Premium Gated Community Villa  
@ Sirigiripur, Tukkguda.

Total No. of Villas : 93  
Construction Area : 2,65,000 Sft.



East Facing 204 Sq.Yds Villa



West Facing 204 Sq.Yds Villa



# Ongoing Project

## SIRI ELITE

A Premium Gated Community Villa  
@ Sirigiripur, Tukkuguda.



Ongoing Project

BIG BULL  
Hyderabad

Construction Area : 40,000 Sft.



## Ongoing Projects

### SATYA TECH PARK Hyderabad.

Total No. of Floors : 15  
Construction Area : 2,25,000 Sft.

### RESIDENTIAL APARTMENT @ Patrika Nagar, Hyderabad.



Total No. of Floors : 10  
Construction Area : 1,00,000 Sft.

SHRADDHA ASSOCIATES



Completed Project

## SAHITI's SUDHA SQUARE

@ Beside KIMS Hospital Kondapur, Hyderabad.

Total No. of Floors : 9

Construction Area : 2,00,000 Sft.





## Completed Project

### LAKE TOWERS

@ Near Inorbit Mall, Hyderabad

Land Area            3 Acres

Construction Area : 5,50,000 Sft.





# Completed Projects

## SRIVIDHYA AMBROSIA

@ Patrika Nagar, Hyderabad.

Total No. of Units : 36

Construction Area : 90,000 Sft.



## SRI VIDHYA PETALS

@ Patrika Nagar, Hyderabad.

Land Area : 1500 Yds.

Construction Area : 65, 000 Sft.



# Completed Project

## ABODE INDEPENDENT VILLAS

@ Gollapudi, Vijayawada.

Land Area	:	2 Acr.
Construction Area	:	70, 000 Sft.
Villas	:	30.



## Completed Projects



Pawan Kalyan



KPHB Colony 4th Road



V. V. Vinayak, Director



Nizampet



Road No.31, Jubilee Hills



Jayaprada's Vibe, Banjara Hills



Ayyappa Society



Nallamalupu, Buji-Film Producer

## Completed Projects



Metro Heights, Kukatpally



Namitha Isle, Panjagutta



Beyond Coffee



Sathavahana Nagar



Miyapur Main Road



Srihitha Enclave & Sri Ganesh Arcade



Siri Nizampet



Vasuki Chandini, Jewel



Jubilee Enclave

## Our Team

### The Drivers of our Success

We know our people are at the core of our continuing success. Our board and construction teams are key to our success and our reputation. We have highly trained and qualified senior management team, with a wide range of construction skills and experience, dedicated to providing best value for our Clients.



Hyderabad Team



Vijayawada Team

## Clients who rely on us



## Celebrity Clients

| VV Vinayak | Pawan Kalyan | Nallamalupu Bujji | Vijay Bhaskar Reddy

## Health and Safety

We will not compromise Health & Safety for the sake of getting the job done. We care about the safety and welfare of our people.

Safety is, and always will be, our number one priority; the safety and welfare of our people can never be taken for granted.

Everyone, regardless of job role, has an important part to play in executing our Zero Harm strategy, and we all have a responsibility to ensure the safety and welfare of our colleagues, our site operatives, and of the people within the communities in which we work.

By working together, looking out for one another and having the confidence to challenge behaviours, acting when we feel something doesn't look or feel safe, we will achieve Zero Harm.

## Machinery we offer

**Our machinery and equipment speak all about us.**

- |   |            |                           |                       |
|---|------------|---------------------------|-----------------------|
| • Tower Crane (ACE)                       | : 2 No.s   | • JCB                     | : 1 No.               |
| • Concrete Batching Plant per hour 30 Qum | : 1 No.    | • Concrete Miller         | : 2 No.s              |
| • Sany Concrete Pump 50C                  | : 1 No.    | • Welding Machines        | : 2 No.s              |
| • Pipeline                                | : 250 Mtr. | • Gas Cutter              | : 1 No.               |
| • Transmixers                             | : 4 No.s   | • Plate and Pin Vibrators | : 16 No.s             |
| • In House Lab                            | : 1 No.    | • Storage tanks           | : 60,000 Ltr capacity |
| • Tractors                                | : 4 No.s   | • Earth Compactors        | : 4 No.s              |
| • Total Station Instruments               | : 2 No.s   | • Tippers (550 Cft )      | : 4 No.s              |
| • Auto Level                              | : 4 No.s   | • Tippers (300 Cft )      | : 2 No.s              |
| • Generators 60kv and 120kv               | : 2 No.s   | • Compressors             | : 2 No.s              |
| • Hitachi 200                             | : 1 No.    | • Shuttering Material     | : 2,00,000 sft.       |
| • Hitachi-70                              | : 1 No.    | • Scaffolding             | : 45,000 sft.         |

# Methodology of executing Projects

## Safety

- ◆ Personal Protection Equipment (PPE) is provided
  - Helmet
  - Shoes
  - Safety belts
  - Gum Boots & Gloves for workers working with concrete & cement
  - Goggles & gloves for welder
- ◆ No loose clothing
- ◆ Barricading of work area
- ◆ Fire safety
- ◆ Material Management
- ◆ Safety check sheet, daily & monthly

## Quality

- Quality Engineer is appointed
- Efficient Materials
- Test material in govt. approved laboratories

## Speed

- ◆ Planning
  - Manpower
  - Management staff
  - Materials & Equipment's
- ◆ Execution
- ◆ Control

# Quality Assurance

We are continually evolving our policies and procedures ahead of expectations. Together with our training commitment, we are confident that the quality of our projects, staff, systems and procedures will improve one step ahead of our competitors.





# SINDHUJA INFRA Projects LLP

Flat No 301, 3rd Floor,

Gayatri Enclave, Guttala Begumpet,

Jubilee Hills, Hyderabad - 500081

+91 40 4002 1699

+91 9849 88 47 59, 9666 44 66 99

+91 9866 12 16 09, 9000 70 30 40

info@sindhujainfra.com

www.sindhujainfra.com